



AMBULATORY CARE

Comprehensive evidence-based authorization support for procedures, diagnostic tests, imaging, rehabilitation services, DME, injectables and more.

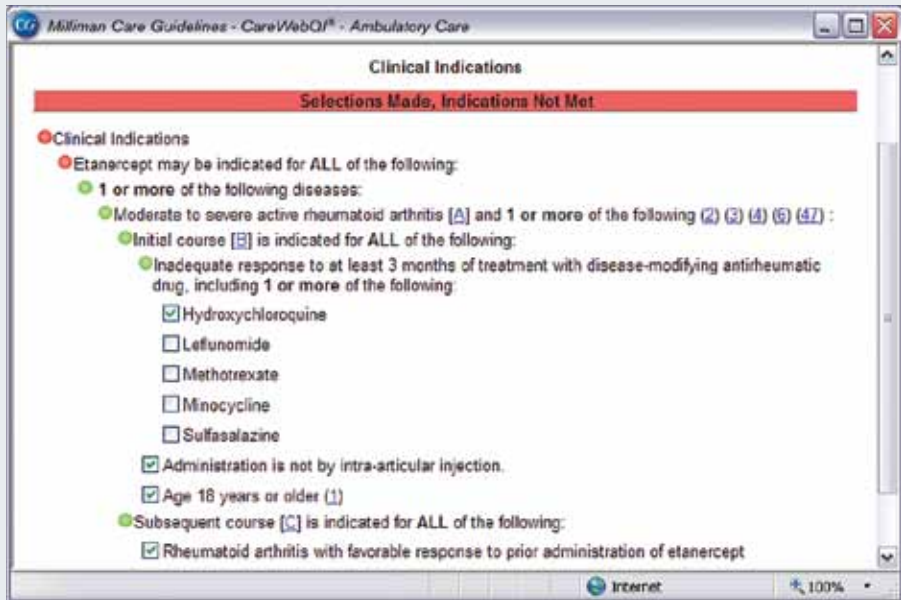


EVIDENCE-BASED AUTHORIZATION

Ambulatory Care is the comprehensive authorization tool of choice for organizations reviewing all major established and emerging clinical procedures and technologies. These include imaging, procedures, diagnostic tests, DME, injectables, specialty referrals, rehabilitation services and more.

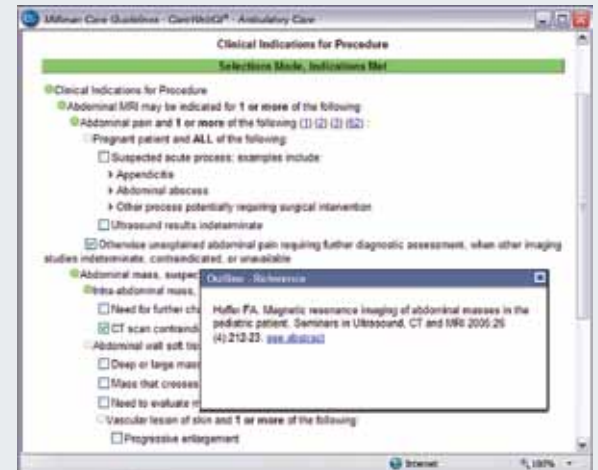
Criteria and guidelines are searchable by ICD-9, CPT®* and HCPCS codes, providing quick access to the most frequently-used categories. Busy care managers can quickly find comprehensive background, diagnosis, and treatment information, while accessing up-to-date information on emerging technologies and many difficult-to-manage issues.

*CPT is a registered trademark of the American Medical Association



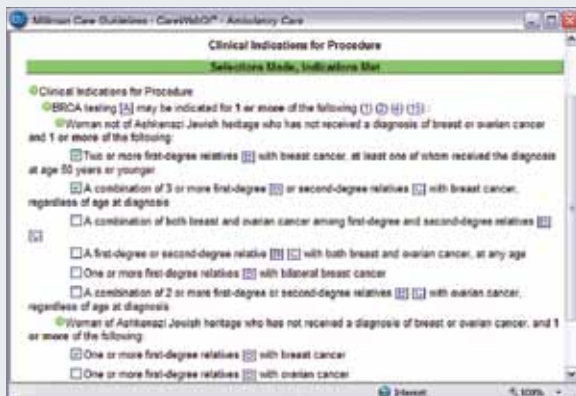
Click to enlarge

► **Injectables and Other Pharmacologic Treatments:** Over 50 guidelines provide criteria or evidence summaries for pharmacologic agents. These include intravenous immunoglobulins, growth hormone, botulinum toxin, erythropoietin, and cancer chemotherapy agents, (e.g., Erbitux® and Herceptin®).



Click to enlarge

► **Imaging:** Among the most widely-used and effective tools for UM programs across the nation, these criteria can be accessed by ICD-9, CPT®* and HCPCS codes, diagnosis, technology or body region. This section delivers precise, actionable indications for imaging tests, including PET, CT, CT angiography, MRI, MR angiography, nuclear medicine, ultrasound and catheter angiography.



Click to enlarge

► **Procedures and Diagnostic Tests:** Provides criteria for established procedures and diagnostic tests (such as tonsillectomy and cardiac exercise testing), as well as emerging ones (such as assisted reproductive technology and genetic testing). Broad coverage from Allergies to Orthopedics to Urology offers the decision support needed to distinguish appropriate from inappropriate usage.

Durable Medical Equipment, Prosthetics, Orthotics, and Supplies (DMEPOS): Decision support is offered for CPAP, wheelchairs and scooters, specialty beds and mattresses, and other problem areas.

Evidence-based Methodology: The full-time staff producing the *Milliman Care Guidelines*[®] uses the industry's most rigorous evidence-based methodology. Clinician editors review thousands of articles during guideline development, with all applicable evidence being referenced within the product and abstracts made available where possible.

More Criteria And Information:

- Referral Management
- Statistical Companion
- Optimum Treatment Guidelines (Background, Diagnosis and Treatment)
- Rehabilitation Services
- Care Management Tools



Software and Strategic Alliances

The current best evidence is optimal only when easily used by healthcare professionals to make decisions about the care of individual patients. From web-based applications, to interactive software producing real-time management reports, to handheld versions, *Care Guidelines* software and strategic alliances make the current best evidence readily available for use where it matters: at the point of care.

CareWebQI® – Web-based interactive software that captures and reports on real-time clinical data through consistent point-and-click application and easy-to-use variance selection. This enables users to identify inappropriate care, providing reports about variances from evidence-based best practice; physician, facility and resource delays; national quality measures; and more. Installable version also available.

Web – Provides access from any Internet-ready computer.

PC – Makes the *Care Guidelines* available through an application for Windows®.

Handheld – Use the *Care Guidelines* through a PDA.

Intranet – An HTML version that can be customized for intranet use.

Interrater Reliability Tool – Measures consistent and appropriate use of the *Care Guidelines*. Web-based software tests ability to find the right guideline, including relevant sections, and to apply it appropriately.

Strategic Alliances – The *Care Guidelines* are integrated with 30 care management programs from 25 Strategic Alliance Partners, providing clients with improved workflow. For more information regarding alliances, visit www.careguidelines.com/sap.

For more information on the *Care Guidelines*, licensing or training, please call us at 888 464.4746 or visit our website at www.careguidelines.com.

719 Second Ave, Suite 300
Seattle, WA 98104

Additional Products:

Inpatient and Surgical Care

A key evidence-based resource for proactive inpatient care management, including criteria, goals, care pathways and other decision-support tools.

General Recovery Guidelines

Ideal when there isn't a guideline for the diagnosis, or when the clinical situation is so complex that a guideline is not easily applied.

Recovery Facility Care

A detailed and comprehensive means to develop effective plans for recovery facility admission, care and discharge.

Home Care

A comprehensive planning resource to smoothly move patients to home healthcare.

Chronic Care Guidelines

A tool to facilitate outpatient care for chronic or complex diagnoses.

Behavioral Health Guidelines

Reliable, evidence-based tools and criteria that address appropriateness of specific psychological, behavioral and pharmacologic therapies.